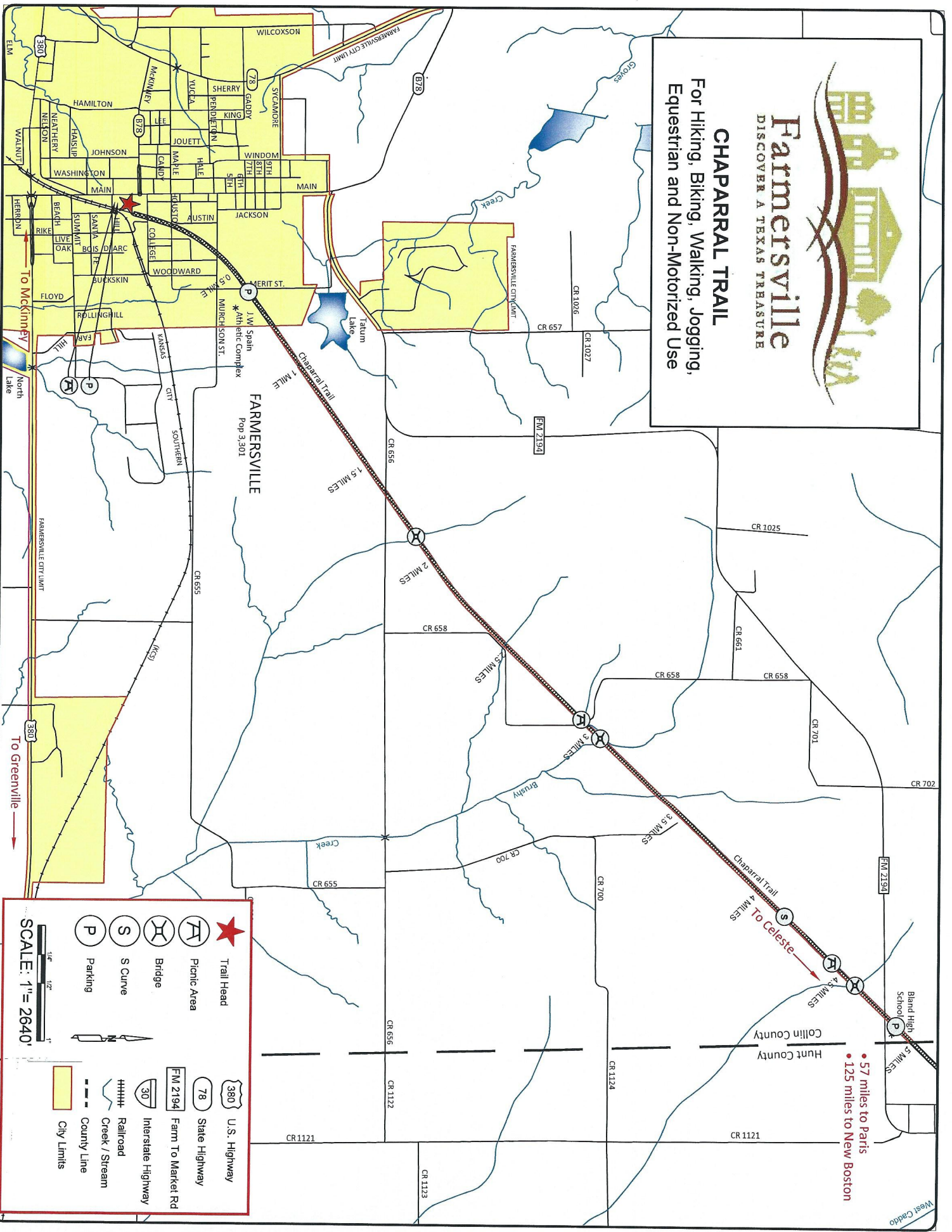


Farmersville
DISCOVER A TEXAS TREASURE

CHAPARRAL TRAIL

For Hiking, Biking, Walking, Jogging,
Equestrian and Non-Motorized Use



• 57 miles to Paris
• 125 miles to New Boston

SCALE: 1" = 2640'

	Trail Head		U.S. Highway
	Picnic Area		State Highway
	Bridge		Farm To Market Rd
	S Curve		Interstate Highway
	Parking		Railroad
			Creek / Stream
			County Line
			City Limits